



## COMMISSION STRUCTURES

**1.** The Chair of Specialist Commissions will be proposed by the President, subject to ratification by the Motor Sport Council (MSC).

**2.** When Safety or Driver Representatives are appointed to Commissions they will be nominated by the MSC in consultation with the Chair of the relevant Commission.

**3.** The nomination of the chairs of Rally Sub-commissions will be made by the Rallies Commission chair, subject to ratification by the MSC. The remaining MSC nominations will not necessarily be members of the MSC.

**4.** In the interests of improved continuity in carrying out the work of the commissions, nominations from eligible clubs in each discipline will be sought on a rolling basis. Club Representatives should be submitted by the club secretary in writing before the 30th September each year. The accompanying tables for the commissions concerned indicate how the system operates.

**5.** A member of a commission nominated by a club may serve a 2-year term and does not need to be nominated again for the second year.

**6.** A person appointed as Commission Chair may serve 4 years in that position, even though they may have served previously on the relevant commission. All other Representatives may serve a maximum of 4 continuous years on the same commission, other than the Safety, Technical, Volunteers & Officials and Rules commission nominees. Championship registrars who sit on commissions are not subject to the four year rule. Their appointment to be proposed by the chair of the discipline commission and ratified at MSC each year.

**7.** It is permissible for the same person to serve a maximum of two consecutive terms as outlined in Article 5 above as a member of the same commission, but only as a representative or nominee of two separate Clubs or bodies.

**8.** Appointments to Commissions are normally for a period of one year ceasing 31st December.

**9.** It is the responsibility of each Specialist Commission to maintain the commission / sub-commission rosters to ensure that the appropriate clubs are included or removed as necessary. All updated rosters must be submitted to the MSC for approval.

**10.** Clubs whose turn it is to make a nomination or in the previous year, for a particular discipline must be active at the time of nomination in

running an event in the discipline concerned. In the case of the Rally Commission the club must have a stages rally on the motorsport calendar at the time of nomination or in the previous year.

**11.** Clubs should liaise with those other clubs that are entitled to make nominations for the same discipline at the same time.

**12.** A first time club, i.e. a club running an event in a discipline for the first time will be placed at the end of the rota list. That is in a position immediately before that of the club(s) who has a nominated member(s) serving in the year in which the first time club runs an event.

**13.** The person being nominated need not necessarily be a member of the club but preferably be the "best person for the job". In addition, the person should confirm that they are willing to serve on the commission in question, to work for the overall benefit of the discipline/sport and be able to attend meetings in accordance with the normal frequency for that commission.

### 14.

**14.1.** Vacancies occasioned by:

- a. ineligibility or failure of a club to nominate,
- b. ineligibility under Article 10 of this Appendix, or
- c. disqualification imposed under GCR 152, will be filled by the MSC.

**14.2.** Vacancies arising for any other reason, e.g. death or illness will be filled by the MSC, having regard to maintaining, in so far as possible, the balance of representation as set down in this Appendix and taking into consideration, any suggestions submitted by the nominating club.

**14.3.** In the case of sub-commissions, these vacancies will be filled by the main commission e.g. Rallies, subject to MSC approval.

**15.** The President may not hold any additional office on a Specialist Commission during their period of appointment.

**16.** A commission may appoint one person to act as secretarial assistant, subject to MSC approval. This person will not have a vote and the role is restricted to secretarial duties.

**17.** Deleted.

**18.** Deleted

**19.** Terms of Reference for the commissions can be found in Appendix 102.



## OVERALL COUNCIL STRUCTURE

### Motorsport Council (MSC)

The membership of the MSC shall not exceed twenty-two and shall comprise the following:

#### President / Vice President

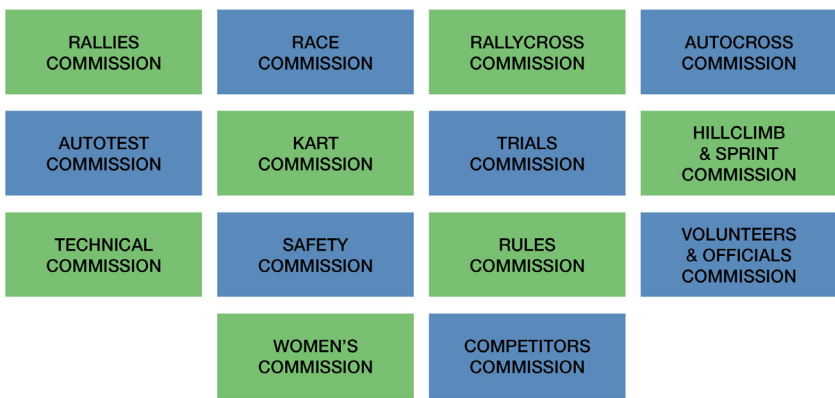
The President and Vice President of the MSC shall be elected by the MSC members from its own membership in accordance with the rules published annually in the Motorsport Ireland Yearbook.

#### Members

- (a) Three persons nominated from time to time by the IAC.
- (b) Three persons nominated by the Board of Directors of the IMF.
- (c) The Secretary of IMF.
- (d) Regional Representatives which are for the time being:
  - (I) Eastern: ALMC, GSMC, Co.Kildare MC, Leinster MC, MEC, MRCCI, TDC, IMRC, Laois Rallysport Club, Mondello Park Sports Club.
  - (II) West/North: Mayo & Dist. MC, Birr & Dist. MC, Clare MC, Connacht MC, Donegal MC, Galway MC, Midland MC, Co.Monaghan MC, Co.Cavan MC, Westmeath & Dist. MC.
  - (II) Southern: Carrick-on-Suir MC, Cork MC, Kerry MC, Killarney & Dist. MC, Limerick MC, Tipperary LC&MCC, Skibbereen & Dist. CC, Wexford MC, Carlow CC, Munster Car Club, Munster Kart Club, Imokilly Motor Club.
- (e) The Chair of the Karting, Race, Rally, Technical, Safety, Volunteers & Officials and Rules Specialist Commissions (SC).
- (f) The Representative of each of the Clubman and Speed Groupings which are for the time being:
  - (I) Autotest and Trials
  - (II) Autocross, Hillclimb/Sprint and Rallycross.The Representative for each Grouping to be agreed by the Chairs of the Specialist Commissions in each Grouping.
- (g) Such other person(s) as the Board of Directors of IMF from time to time shall nominate.



**COMMISSION STRUCTURE**



**RALLY SUB-COMMISSIONS:**  
 NATIONAL STAGES RALLY | NATIONAL FORESTRY RALLY | NATIONAL NAVIGATION

**SAFETY SUB-COMMISSIONS:**  
 MEDICAL | RESCUE | RALLY | CIRCUIT & HILLCLIMB & SPRINT | RESEARCH

**VOLUNTEERS & OFFICIALS SUB-COMMISSIONS:**  
 MARSHALS | TRAINING



# COMMISSION STRUCTURES

## APPENDIX 101

### Rallies Commission

12 Members  
 6 MSC Nominations (inc. Chair and Technical)  
 6 Club Representatives

### RALLIES COMMISSIONS

2023	Carrick-On-Suir Westmeath (MSC)	GSMC Birr	Connacht Clare
2024	Westmeath (MSC) Munster	Birr Wexford	Clare Laois
2025	Munster Monaghan	Wexford Galway	Laois Donegal
2026	Monaghan Skibbereen	Galway Limerick	Donegal Midland
2027	Skibbereen Killarney	Limerick Imokilly	Midland Cavan
2028	Killarney Cork	Imokilly Mayo	Cavan ALMC
2029	Cork Carlow	Mayo Kerry	ALMC Tipperary

### Rallies Sub Commission

5 Members  
 3 Rallies Commission Nominations (Chairman, Championship Registrar plus one)  
 2 Club Nominations

### RALLIES SUB-COMMISSIONS

Year	National Stages Rally	National Forestry Rally	National Navigation
2023	Clare Kerry (MSC)	Mayo Cork	ALMC Cavan
2024	Kerry (MSC) Connacht	Cork Tipperary	Cavan Skibbereen
2025	Connacht Cavan	Tipperary Killarney	Skibbereen Monaghan
2026	Cavan Carrick-On-Suir	Killarney Munster	Monaghan Cork
2027	Carrick-On-Suir Tipperary	Munster Midland	Cork Birr
2028	Tipperary Galway	Midland Carrick-On-Suir	Birr Donegal
2029	Galway Skibbereen	Carrick-On-Suir Limerick	Donegal Midland



**Race Commission**

---

**Rallycross Commission**

---

**Autocross Commission**

8 Members  
4 MSC Nominations (inc Chair)  
4 Club Representatives

- 2023 - Tipperary, Munster, Carrick-On-Suir, Birr
- 2024 - Carrick-On-Suir, Birr, Imokilly, Westmeath
- 2025 - Imokilly, Westmeath, Midland, GSMC
- 2026 - Midland, GSMC, Wexford, Cork
- 2027 - Wexford, Cork, Galway, Limerick
- 2028 - Galway, Limerick, Cavan, Cork
- 2029 - Cavan, Cork, Munster, Clare

---

**Autotest Commission**

6 Members  
2 MSC Nominations (inc Chair)  
4 Club Representatives

- 2023 - Cork, Connacht, Galway (MSC), Laois (MSC)
- 2024 - Galway (MSC), Laois (MSC), TDC, Skibbereen, Cavan, Killarney
- 2025 - Skibbereen, Cavan, Killarney, TDC, Munster, Birr
- 2026 - TDC, Munster, Birr, ALMC, Limerick, Mayo

---

**Kart Race Commission**

Up to 6 Members

---

**Trials Commission (incl. Sporting & 4x4 and Production Trials )**

6 Members  
3 MSC Nomination (inc Chair)  
3 Club Representatives – 2 Sporting Trials, 1 from 4x4.

---

**Hillclimb & Sprint Commission**

7 Members  
3 MSC Nominations (inc Chair)  
4 Club Representatives

- 2023 - MEC, Donegal, Carlow, Limerick
- 2024 - Carlow, Limerick, Connacht, Wexford
- 2025 - Connacht, Wexford, Carrick-On-Suir, Clare
- 2026 - Carrick-On-Suir, Clare, Galway, GSMC
- 2027 - Galway, GSMC, Westmeath, Kerry

---

**Technical Commission**

Up to 8 members  
8 MSC Nominations  
Representative of a range of disciplines



**Safety Commission**

Up to 10 members

10 MSC Nominations

---

**Safety Sub-Commissions:**

Up to 7 members each Sub-Commission

7 MSC Nominations

**Volunteers & Officials Commission**

10 members

10 MSC Nominations

**Volunteers & Officials Sub-Commissions:**

Up to 8 members each Sub-Commission

8 MSC Nominations

**Marshals Sub-Commission:**

Up to 12 members

8 MSC Nominations

---

**Rules Commission**

5 MSC Nominations

---



Organisational Structure:

